



## AlfaNova 76

### Plate Heat Exchanger

#### General information

Based on a revolutionary innovation in material design and manufacturing method, AlfaNova is the world's first plate heat exchanger made of 100% stainless steel. It is extremely compact compared to its capacity to withstand great strains in demanding heat transfer applications. Its high resistance to corrosion makes it both hygienic and environmental friendly.

#### Applications

##### Within Refrigeration

- Oil cooler
- Condenser
- Evaporator
- Economizer
- Desuper heater
- Absorption systems

##### Other main applications

- Domestic hot water heater
- Process cooling
- Hydraulic oil cooling

#### Working principles

The heating surface consists of thin corrugated metal plates stacked on top of each other. Channels are formed between the plates and corner ports are arranged so that the two media flow through alternate channels, always in counter-current flow. The media are kept in the unit by a brazed seal around the edge of the plates. The contact points of the plates are also brazed to withstand the pressure of the media handled.

#### Standard design

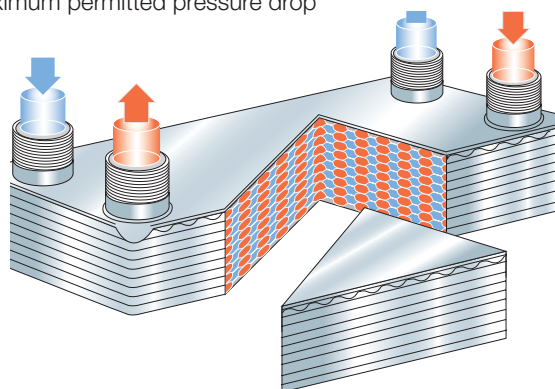
The plate pack is covered by cover plates. Connections are located in the front or rear cover plate. The channel plates are corrugated to improve heat transfer design.



#### Particulars required for quotation

To enable Alfa Laval's representative to make a specific quotation, enquiries should be accompanied by the following particulars:

- flow rates or heat load required
- temperature program
- physical properties of liquids in question
- desired working pressure
- maximum permitted pressure drop



Flow principle of an AlfaNova plate heat exchanger

## Standard data

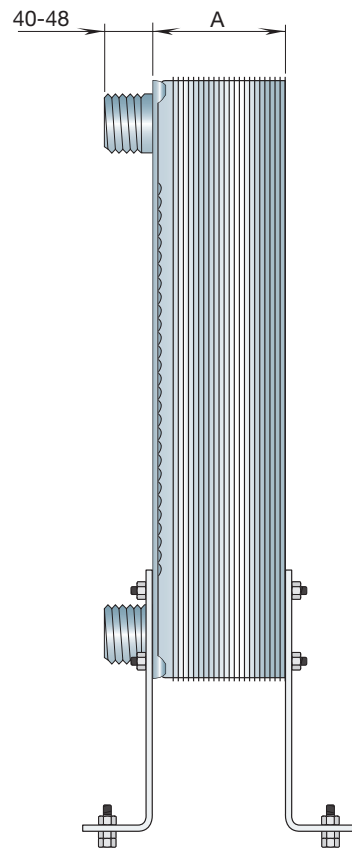
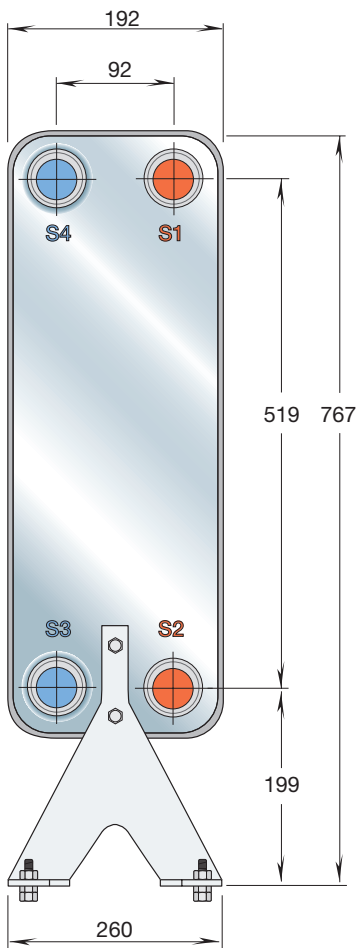
Min. working temperature	-50°C
Max. working temperature	175°C
Min. working pressure	Vacuum
Max. working pressure	25 bar
Volume per channel, litres	0.25
Max. flowrate *)	34 m³/h

\*) Water at 5 m/s (connection velocity)

## Standard materials

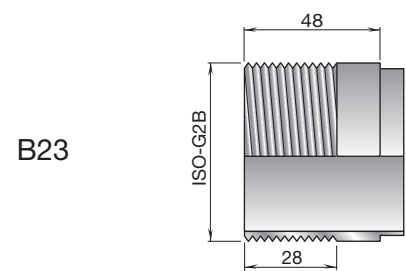
Cover plates	Stainless steel AISI 316
Connections	Stainless steel AISI 316
Plates	Stainless steel AISI 316
AlfaFusion filler	Stainless steel AISI 316

## Standard dimensions



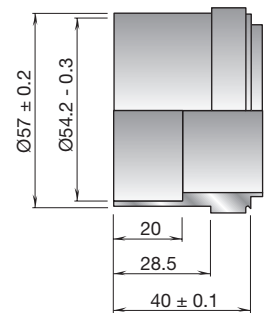
$A = 10 + n \times 2.85$   
 Weight kg:  $9.0 + n \times 0.44$  with feet  
 (n = number of plates)  
 Measurements in mm

## Standard connections

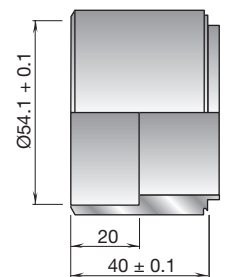


B23

D21



J23



### How to contact Alfa Laval

Contact details for all countries are continually updated on our website. Please visit [www.alfalaval.com](http://www.alfalaval.com) to access the information direct.