



## Condensate tank of rectangular design type SDR A with high-pressure centrifugal pump(s) installed next to the tank

### Application

Condensate tanks are used to collect the condensate coming from steam users or flash vessels. From the tank the condensate is pumped into the feedwater tank by a level-controlled pump, in most cases via a deaerator.

### Rectangular condensate tank type SDR A

The standard range of rectangular condensate tanks is designed for condensate flowrates of up to 10 t/h and a max. service pressure of 0.1 barg.

Tank made of steel type S235JRG2 (RSt 37-2), inside: untreated, outside: anti-corrosion coating  
**with two\*) condensate pumps and accessories installed next to the tank, e.g.** bimetal dial thermometer, water-level indicator, GESTRA level electrode and control for automatic pump operation, non-return valves, shut-off valves, high-pressure centrifugal pump(s) and pressure gauge.

Completely assembled and interconnected, control cabinet supplied but not mounted.

### Technical modifications reserved.

\*) Except size 1  
 (only available with one pump)

Size	Volume l	Pumping capacity m <sup>3</sup> /h	Discharge head mWs	Pump capacity kW	Stock code
1	340	1	17	0.37	4901133
2	550	2	16	0.37	4901233
3	750	3	15	0.37	4901333
4	1000	4	19	0.55	4901433
5	1500	6	19	0.75	4901533
6	2000	8	17	0.75	4901633
7	2500	10	21	1.10	4901733

### Optional extras

Plastic coating type "A" up to max. 130 °C  
 Plastic coating type "B" up to max. 95 °C

Tanks and valves made of other materials available on request.  
 Other pumping capacities and discharge heads on request.



## Condensate tank of rectangular design type SDR I with submersible condensate pump(s) bolted on top

### Application

Condensate tanks are used to collect the condensate coming from steam users or flash vessels. From the tank the condensate is pumped into the feedwater tank by a level-controlled pump, in most cases via a deaerator.

### Rectangular condensate tank type SDR I

The standard range of rectangular condensate tanks is designed for condensate flowrates of up to 10 t/h and a max. service pressure of 0.1 barg.

Tank made of steel type S235JRG2 (RSt 37-2), inside: untreated, outside: anti-corrosion coating

#### installed with two\*) submersible pumps on top and related accessories and valves, such as:

bimetal dial thermometer, water-level indicator, GESTRA level electrode and control for automatic pump operation, non-return valves, shut-off valves, submersible pump(s) and pressure gauge.

Completely assembled and interconnected, control cabinet supplied but not mounted.

#### Technical modifications reserved.

\*) Except size 1 (only available with one pump)

Size	Volume l	Pumping capacity m <sup>3</sup> /h	Discharge head mWs	Pump capacity kW	Stock code
1	340	1	17	0.37	4901132
2	550	2	16	0.37	4901232
3	750	3	15	0.37	4901332
4	1000	4	19	0.55	4901432
5	1500	6	19	0.75	4901532
6	2000	8	17	0.75	4901632
7	2500	10	21	1.10	4901732

### Optional extras

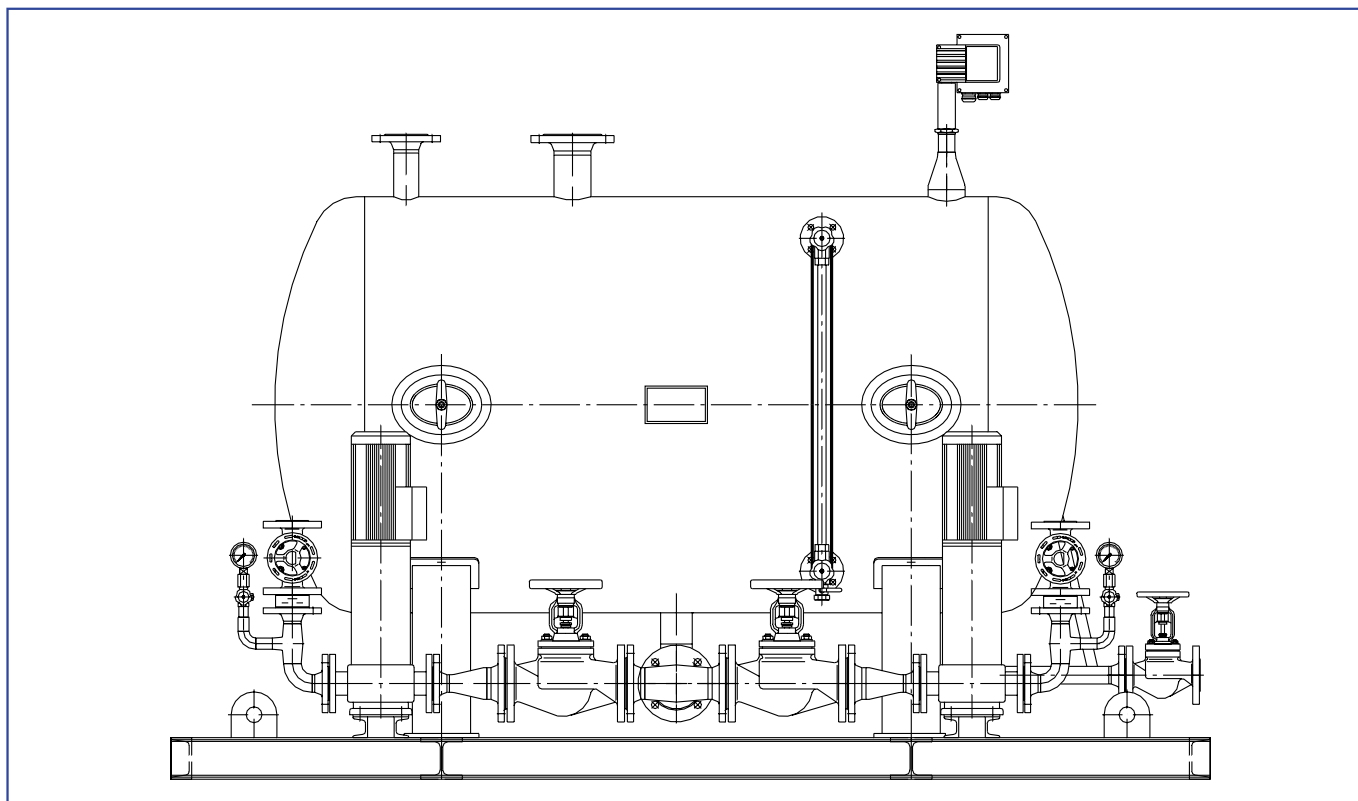
Plastic coating type "A" up to max. 130 °C

Plastic coating type "B" up to max. 95 °C

Tanks and valves made of other materials available on request.

Other pumping capacities and discharge heads on request.

# Open-Type Condensate Recovery and Return Tank SD L 100



**Condensate receiver tank of cylindrical design type SD L (S)**  
**with high-pressure centrifugal pump(s) installed next to the tank**  
 L = horizontal design; S = vertical design

Size	Volume l	Pumping capacity m <sup>3</sup> /h	Discharge head mWs	Pump capacity kW	Stock code
I	250	1	19	0.37	4901130
II	390	2	17	0.37	4901230
III	850	4	22	0.55	4901330
IV	1370	6	22	0.75	4901430
V	2100	9	18	0.75	4901530
VI	2900	12	25	2.20	4901630
VII	3800	16	22	2.20	4901730
VIII	4500	20	19	2.20	4901830
IX	5900	25	25	3.00	4901930
X	6900	30	21	3.00	4902030

## Optional extras

Plastic coating from D = 1000 mm onwards possible: type "A" up to max. 130 °C  
 Plastic coating from D = 1000 mm onwards possible: type "B" up to max. 95 °C

Other valve and tank materials available on request.

Other pumping capacities and discharge heads on request.

## Application

Condensate tanks are used to collect the condensate coming from steam users or flash vessels. From the tank the condensate is pumped into the feedwater tank by a level-controlled pump, in most cases via a deaerator.

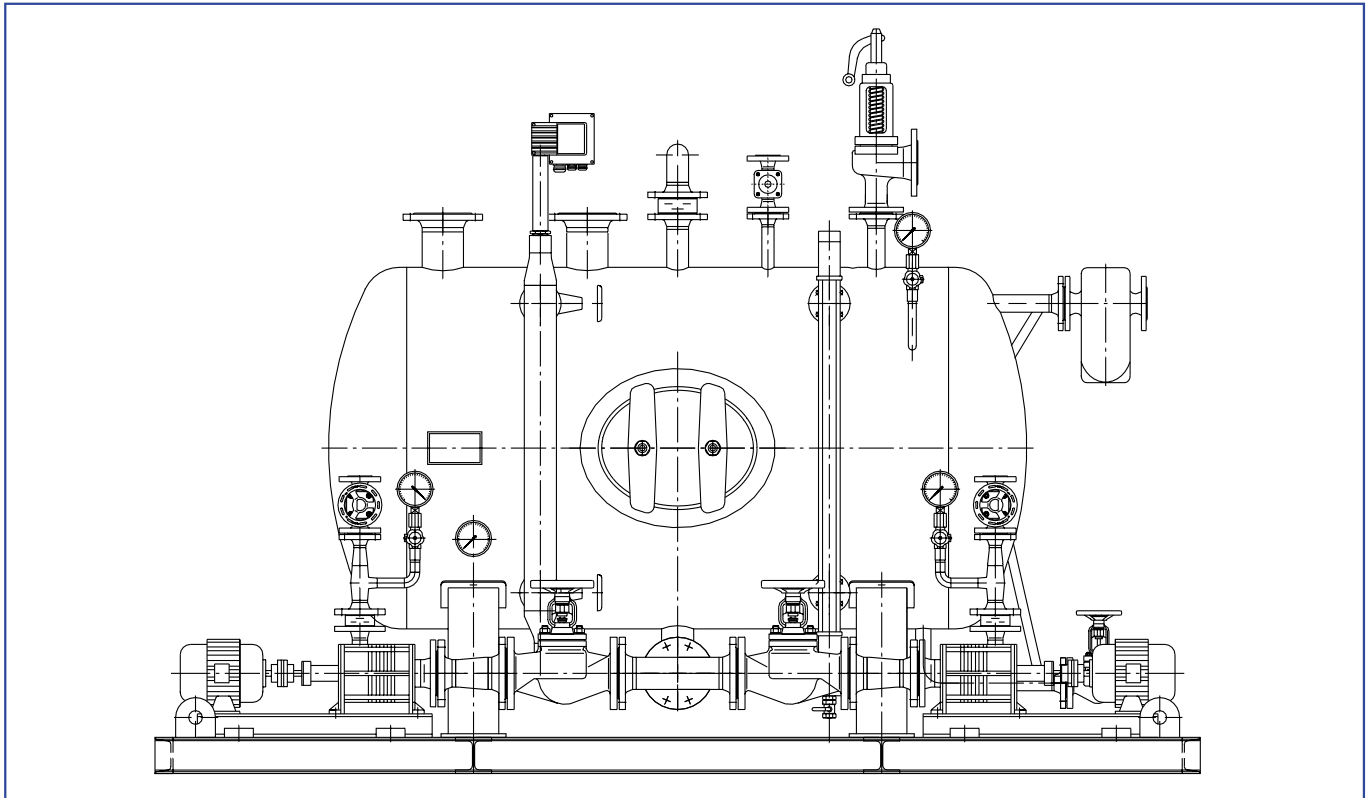
## Open condensate tank of cylindrical design type SD L (S)

The standard range of cylindrical condensate tanks is designed for condensate flowrates of up to 30 t/h and a max. service pressure of 1 bar. Higher flowrates available on request.

Tanks available as horizontal and vertical design, made of steel S235JRG2 (RSt 37-2), inside: untreated, outside: anti-corrosion coating **with two high-pressure pumps and associated valves and accessories installed next to the tank:** e.g. bimetal dial thermometer, pressure gauge assembly, water-level indicator, level electrode and control for automatic pump operation and non-return valves. Completely assembled and interconnected, control cabinet supplied but not mounted.

**Technical modifications reserved.**

# Closed-Type Condensate Recovery and Return Tank SD L 130



## Condensate receiver tank of cylindrical design type SD L (S) with horizontal-type centrifugal pump(s) installed next to the tank

L = horizontal design; S = vertical design

Size	Volume l	Pumping capacity m <sup>3</sup> /h	Discharge head mWs	Pump capacity kW	Stock code	TÜV inspection charges
I	250	1	20	0.75	4901131	acc. to expenses
II	390	2	20	1.10	4901231	
III	850	4	30	1.50	4901331	
IV	1370	6	18	1.50	4901431	
V	2100	9	20	2.20	4901531	
VI	2900	12	22	2.90	4901631	
VII	3800	16	24	3.60	4901731	
VIII	4500	20	26	4.30	4901831	
IX	5900	25	28	5.00	4901931	
X	6900	30	30	5.70	4902031	

## Application

Condensate tanks are used to collect the condensate coming from steam users or flash vessels. From the tank the condensate is pumped into the feedwater tank by a level-controlled pump, in most cases via a deaerator.

## Closed condensate tanks of cylindrical design type SD L (S)

The standard range of cylindrical condensate tanks is designed for condensate flowrates of up to 30 t/h and a max. service pressure of 4 bar. Higher pressure ratings and flowrates available on request.

Tanks available as horizontal and vertical design, made of steel boiler plate type P265GH (H II), inside: untreated, outside: anti-corrosion coating **with two horizontal-type centrifugal pumps and associated valves and accessories installed next to the tank:** e.g. bimetal dial thermometer, pressure gauge assembly, magnetically operated liquid level gauge, level electrode and control for automatic pump operation, safety device, overflow, air vent, vacuum breaker, shut-off valves and non-return valves. Completely assembled and interconnected, control cabinet supplied but not mounted.

**Technical modifications reserved.**

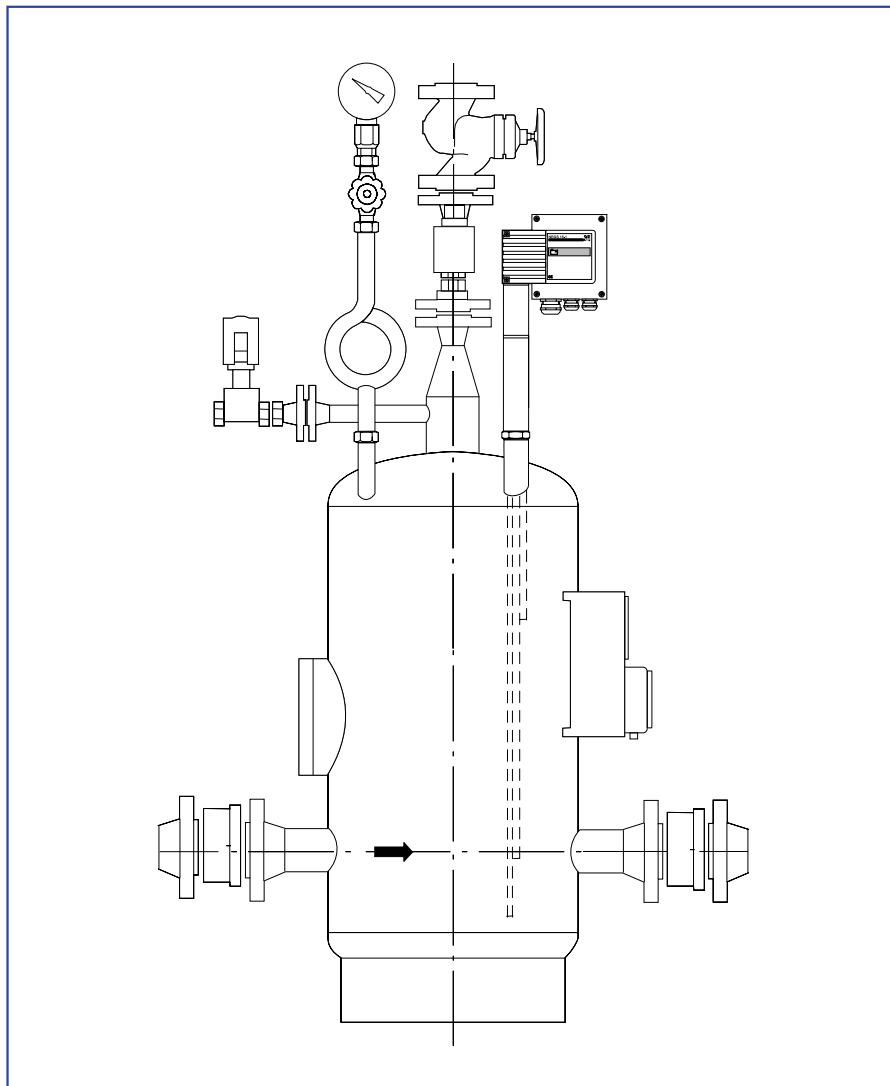
### Optional extras

Plastic coating from D = 1000 mm onwards possible: type "A" up to max. 130 °C

Other valve and tank materials available on request.

Other pumping capacities and discharge heads on request.

# Steam Powered Condensate Return Tank KH



## Application

Condensate tanks are used to collect the condensate from steam processors or flash vessels. From the tank the condensate is returned to the main condensate tank or deaerator with the aid of level-controlled booster steam.

## Steam-powered condensate return unit KH...

The standard version is suitable for condensate flowrates of up to 10 t/h and a max. service pressure of 13 bar g.

Tank made of steel type S235JRG2 (RSt 37-20) or of P265 GH (H II), inside: untreated, outside: anti-corrosion coating.

Associated valves and equipment such as pressure gauge assembly, level electrode and control for automatic booster steam supply, non-return valves.

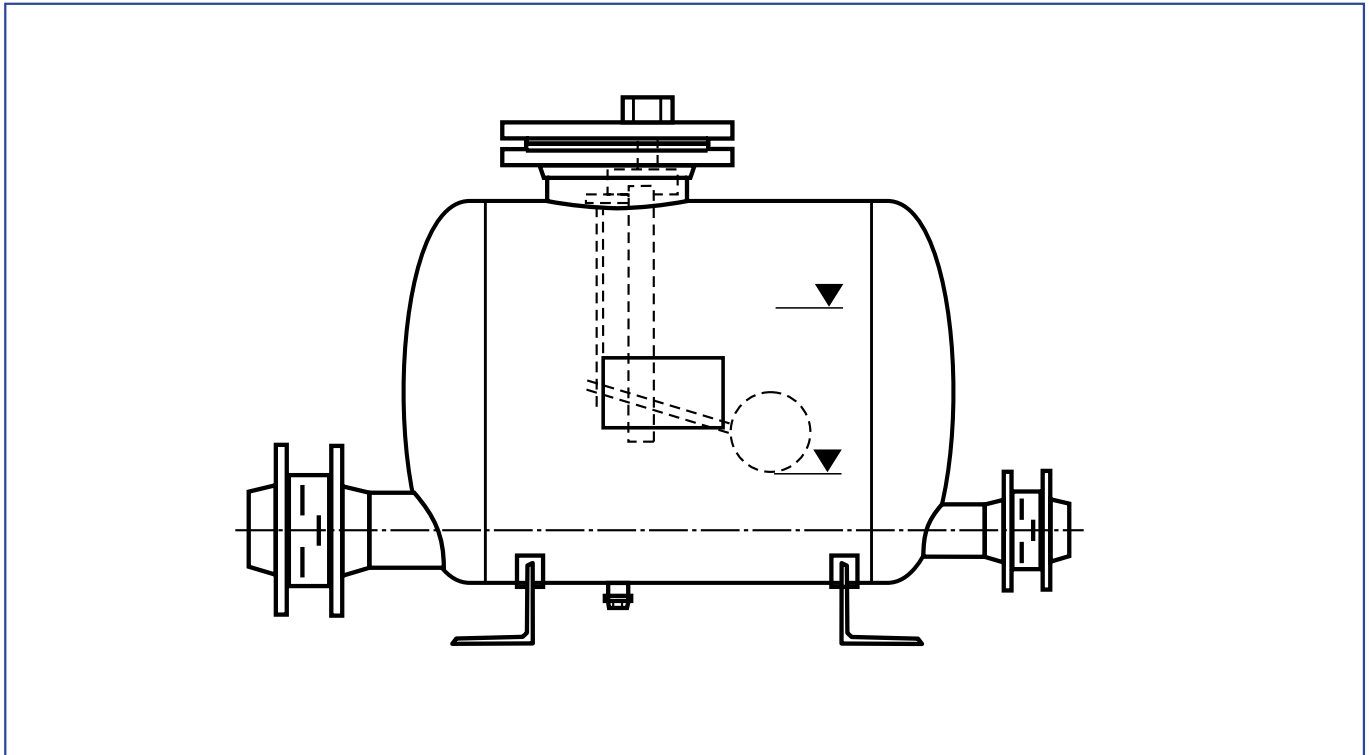
Completely assembled, interconnected and equipped with counter-flanges, bolts and gaskets.

**Technical modifications reserved.**

For larger condensate flowrates use our condensate recovery and return systems.

Type	Volume l	Pumping capacity m <sup>3</sup> /h	Booster steam pressure	Discharge head bar	Stock code
KH 13-2	50	2	13	9.10	4871212
KH 13-3	75	3	13	9.10	4871313
KH 13-5	100	5	13	9.10	4871414
KH 13-10	390	10	13	9.10	4871515

Other tank and valve materials available on request.



Type	Volume l	Pumping capacity m <sup>3</sup> /h	Max. service pressure bar g	Discharge head bar g	Stock code
FPS 14-13	100	6.30	13	1.40	4871411

For more information on booster steam pressure, capacities and discharge head refer to data sheet.

Other tank and valve materials available on request.

## Application

Condensate tanks are used to collect the condensate from steam processors or flash vessels. From the tank the condensate is returned to the main condensate tank or deaerator with the aid of level-controlled booster steam.

## Steam-powered condensate return unit type FPS 14...

The condensate is returned to the main condensate tank with the aid of booster steam, without electric power. The standard version of the FPS 14 is suitable for condensate flowrates of 6 t/h and a max. service pressure of 13 bar g.

The discharge capacity decreases with rising back pressure. The tank is made of steel type S235JRG2 (RSt 37-2) or of P265GH (H II), inside: untreated, outside: antirust paint, and equipped with non-return valves.

Completely assembled and interconnected, inclusive of counter-flanges, bolts and gaskets.

**Technical modifications reserved.**

For larger condensate flowrates use our condensate recovery and return systems.