

GESTRA® Steam Trap • Thermostatic Capsule

Application - Commercial Steam Heating

Model: MK 21 - Angle Connections

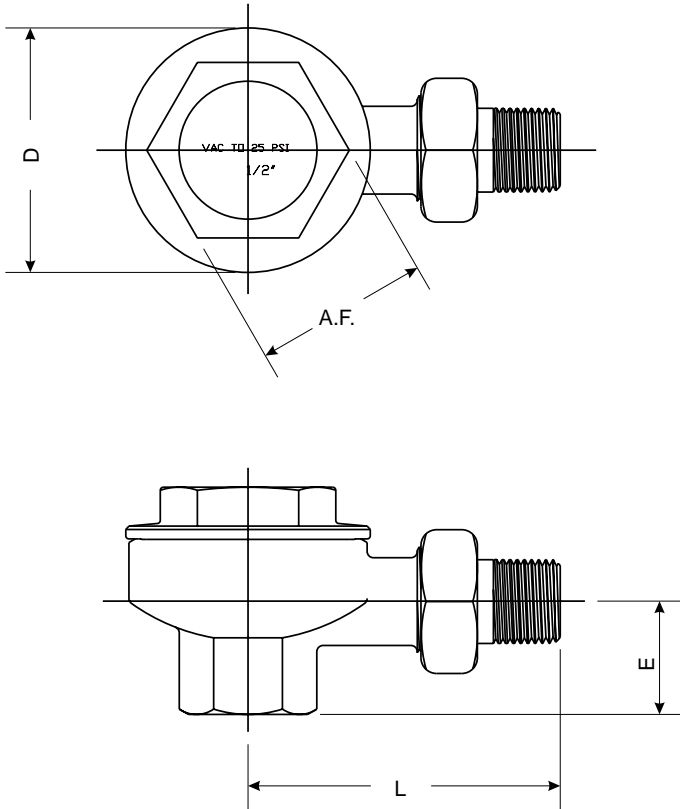
Class Rating: Up to 25 PSIG

25

PSI
Maximum Dp
(1.7 Bar)

LOW PRICE for 1/2"

SIZE: 1/2" (3/4" also available)



Application

The MK 21 series is designed for low capacity heating systems. Especially suited for HVAC applications. The MK 21 series of traps are designed to operate with system pressures from 25" vacuum to 25 psi and automatically vent air and other non-condensable gases.

Features & Benefits

- Threaded cover provides for in-line inspection and maintenance.
- Non clogging renewable seat guaranteed for 25 years.
- Operation is unaffected by back pressure.
- Automatically vents non-condensables and has a high start-up capacity

Materials

- Body & Cover - Cast Brass
- Internals - Brass and Stainless Steel

Capacity Chart

The chart shows the maximum capacities of hot water based on the orifice of the steam traps. The capacities are a function of differential pressure or the difference between inlet and outlet pressures for the trap. The cold water capacity is between 1.1 and 1.7 times the hot capacity dependent on the differential pressure.

		MK 21		
		1/2	3/4	1
psi	bar	15	20	25
		120	232	490
1/2	.03	55	105	222
		165	325	570
1	.07	75	148	259
		200	400	700
1 1/2	.10	91	182	318

Dimensions and Weights		End Connections		
		NPT		
Nominal Sizes	[inch]	1/2	3/4	1
	[mm]	15	20	25
Dimensions	D [inch]	2.4	3.1	3.1
	[mm]	62	78	78
	L [inch]	3.1	3.2	3.4
	[mm]	78	81	87
	E [inch]	1.1	1.1	1.1
	[mm]	28	28	28
A.F. [inch]		1.75	1.75	1.75
	[mm]	45	45	45
Approx. Weight	[lbs]	1.25	1.88	2
	[kg]	0.6	0.9	1

Available End Connections

NPT

How to Order

Specify trap, end connection size and orifice.
For Example: MK 20 3/4" NPT